

LCD / LED DISPLAY AND MOTOR INFORMATION CHART

	Temperatures (F)	Motor	LCD temperature reading	LED color
Cold Therapy Mode	Blanket <=42	Off	Blanket temperature	Green
	Blanket 43-50	On	Blanket temperature	Green
	Blanket 51-64	On	Blanket temperature	Blink Green
Transition Mode	Bucket 65-75	Off	ICE	Red
	Bucket 76-90	Off	Bucket temperature	Amber
Hot Therapy Mode	Bucket 91-120	On	Bucket/blanket temperature	Amber/green
	Bucket > 120	Off	Bucket	Blink Red

TROUBLESHOOTING

Problem	Solution
• Unit will not turn on	Check all connections and ice/water level
• No water flow to blanket	Check for hose kinks and blanket connection
• Unit runs continuously at a high speed	Check ice/water level and add if low
Cold Therapy	
• Red light is illuminated	Water temperature is high. Add ice or follow "Directions for Use" section
• Unit runs then stops	Unit is maintaining optimal temperature



Manufacturer
DeRoyal
200 DeBusk Lane, Powell, TN 37849 U.S.A.
888.938.7828

Authorized Representative
DeRoyal Europe, Ltd.
Virginia Road, Kells, County Meath Ireland
353.46.9280100

Part #543401 Revised 4/07
©2007 DeRoyal. All Rights Reserved.



Model T600 Digital Hot/Cold Therapy Unit

Rx Only
Single Patient Use Only



INDICATIONS FOR USE

Use hot/cold therapy in accordance with your medical professional's direction. Primary use of cold therapy is for pain and soft tissue swelling resulting from surgery or trauma. Hot therapy is intended for relieving vaso-constriction at the treatment site.

INTENDED USE

Cold therapy is intended to reduce pain and soft tissue swelling resulting from surgery or trauma at a localized site. Hot therapy is intended to promote blood circulation and relieve muscle tension at a localized site. Any other use of this product is not recommended.

COMPONENTS

Pump Motor circulates water between unit bucket and therapy blanket.
Circuit Board controls pump motor, regulating water flow from unit bucket to therapy blanket.
Digital Display indicates water temperature in degrees Fahrenheit along with other messages. (see Display Chart)
Unit Bucket holds water and ice.
Brown Sensor Wire in bucket monitors bucket temperature.
Lid screws on and off unit top, allowing access to add or remove ice and water.
Carrying Strap can be used to transport or hang unit.
Hose (attached to the unit bucket) circulates water through the therapy blanket (water circulation pad) and returns water back to the unit bucket.
Power Adapter provides electrical current to unit.
Therapy Blanket covers the affected patient area

allowing water to flow through and return back to unit. (Blankets sold separately or included with combo options.)

CONTRAINDICATIONS

Cold therapy should not be used by those diagnosed with Raynaud's Disease, poor peripheral circulation, diabetes, decreased skin sensitivity, or hypersensitivity to cold. Your healthcare professional should advise you on alternate treatments. Hot therapy should not be used by those diagnosed with decreased skin sensitivity, arteriosclerosis and atherosclerosis. Women who are pregnant should not use heat on their abdomen. When there is a malignancy in the treatment area, hot therapy should not be used.

WARNINGS

- Do not use in the presence of flammable anesthetics or other flammable materials due to the risk of explosion.
- Apply therapy blanket so that it is always readily removable. Do not apply therapy blanket underneath a fiberglass or plaster cast.
- Cold therapy can cause peripheral nerve damage. Carefully read instructions and warnings before using the cold therapy modality of this unit.
- Follow your medical professional's directions for application and duration of use to avoid injury.
- Due to individual differences in sensitivity and susceptibility to cold and hot temperatures, areas of treatment should be observed as recommended by your medical professional.



- To avoid danger of electrical shock, do not plug or unplug transformer from wall outlet with wet hands.
- Use only the 12 Volt DC/1.5 amp adapter and transformer provided with this therapy unit.
- Use this product only in conjunction with DeRoyal brand therapy blankets.
- Do not apply therapy blanket directly to skin or open wound.
- If therapy blanket is leaking water, cease use and replace blanket.

CAUTIONS

- Stop therapy and consult your medical professional immediately if you experience a sensation change, an unusual reaction, decreased skin sensitivity, or unexpected and prolonged pain while using this product.
- Do not operate this unit without direction from a licensed medical professional. Failing to adhere to specific temperature treatment guidelines could result in patient injury.

PRECAUTIONS

- Condensation on therapy blankets may occur when in use depending on the air temperature and temperature at the treatment site. This is normal.
- Avoid pouring water directly on power receptacle located on top of therapy unit.
- Carrying strap is not intended for lengthy transport when unit is full of ice and water.
- Unplug unit when not in use.

PRODUCT INFORMATION

Temperature Control

Note: This is a temperature-controlled unit. Hot/cold therapy unit #T600 is designed to maintain blanket temperatures between 42-48°F (45 ± 3°F) for cold therapy or between 90-120°F for hot therapy. Therefore, you will hear the motor speed change as it increases and decreases the flow rate of water in order to maintain a constant blanket temperature. This temperature control design will maximize your therapy benefits.

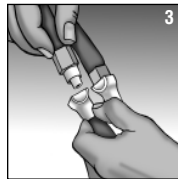
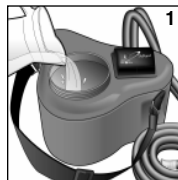
- This hot/cold therapy unit is temperature controlled and must be filled with ice in order to operate for cold therapy or must maintain a

- temperature range of 90-120°F for hot therapy.
- The hot/cold therapy unit motor is designed to not operate at the following water temperatures: 42° or less, between 65-90°F, and greater than 120°F.
- The hot/cold therapy unit motor will run at temperatures between 42-65°F and 90-120°F.
- Larger amounts of ice equal longer cooling times.
- Hot therapy will operate only when the water temperature range is between 90-120°F.
- Unplug when not in use.
- **Cold therapy:** after ice melts, unplug unit, empty unit, and start again (refer to DIRECTIONS FOR USE). Do not add more ice due to risk of overflowing unit.
- **Hot therapy:** once unit shuts off or the temperature falls out of desired range, unplug unit, empty unit, and start again (refer to DIRECTIONS FOR USE).

DIRECTIONS FOR USE

Hot Therapy

1. Remove lid and fill reservoir (unit bucket) full with hot tap water to fill line. Screw lid on tightly and evenly.
2. Place the therapy blanket (pad) over treatment area and secure. Follow directions included with blankets and wraps sold separately or included in hot/cold therapy unit/blanket combo sets.
3. Attach the therapy blanket fittings to the unit hose by inserting ends of blanket tubes into hose fittings. Push each coupling together firmly until you hear a "click". Check for secure connection by lightly tugging on each hose.
4. Plug the power adapter into a standard 120 volt AC outlet.
5. After all connections are made and the blanket is



secured to the treatment site, insert the male end of the power adapter into the jack located on top of the therapy unit.

6. To maximize water flow efficiency, place therapy unit at or above the therapy blanket and treatment site level. Avoid twisting or kinking hoses when unit is running.
 - An amber light LCD temperature reading indicates water temperature in unit bucket.
 - A green light LCD temperature reading indicates water temperature in therapy blanket.

Cold Therapy

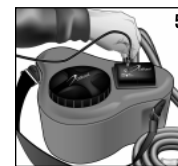
Note: Do not overfill unit. Water must be emptied from unit reservoir before adding more ice and water.

1. Remove lid and fill reservoir (unit bucket) with ice to FILL LINE.
2. Add water until ice is afloat. If the ice/ water level is below FILL LINE, add more ice.

Note: Condensation may collect on top of unit if ice/water level is above FILL LINE.

3. Attach the therapy blanket fittings to the unit hose by inserting ends of blanket tubes into hose fittings. Push each coupling together firmly until you hear a "click". Check for secure connection by lightly tugging on each hose.
4. Plug the power adapter into a standard 120 V AC outlet.
5. After all connections are made and the blanket is secured to the treatment site, insert the male end of the power adapter jack located on top of the therapy unit.
6. To maximize water flow efficiency, place therapy unit at or above the therapy blanket

reservoir (unit



and treatment site level. Avoid twisting or kinking hoses when unit is running.

- A green light will illuminate, signaling the unit is running.
- A red light indicates more ice should be added to unit bucket or there is a >5° temperature difference between bucket and blanket.
- LCD temperature reading indicates water temperature in unit blanket.

To Disconnect Unit

1. Unplug the power adapter from the electrical outlet.
2. Disconnect the male end of the power adapter cord attached on top of the unit bucket.
3. Unwrap treatment area and disconnect hose tubes from blanket by pushing each metal button (coupler) at connection points.

CLEANING AND STORAGE

After use, unscrew top and drain unit. Use a dry towel to collect any remaining moisture. **Tip:** When storing, leave a few dry towels in unit to collect any condensation that may not have been removed when cleaning. To prevent hose kinking, store unit with hose rolled and sitting on top of unit.

USE OF OPTIONAL BED HANGER

1. Place hanger over end of bed or bed railing as shown.
2. Place the unit bucket strap across the bed hanger.

